

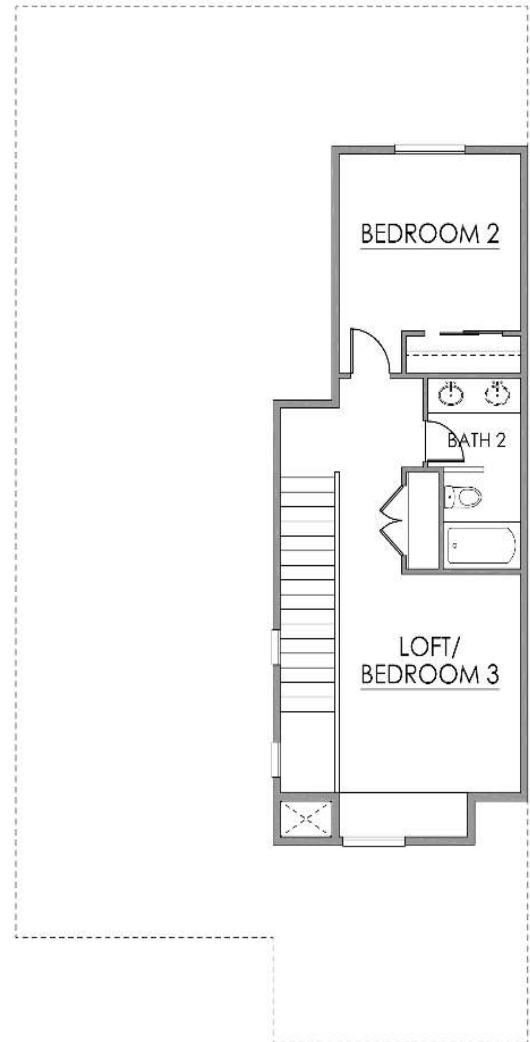
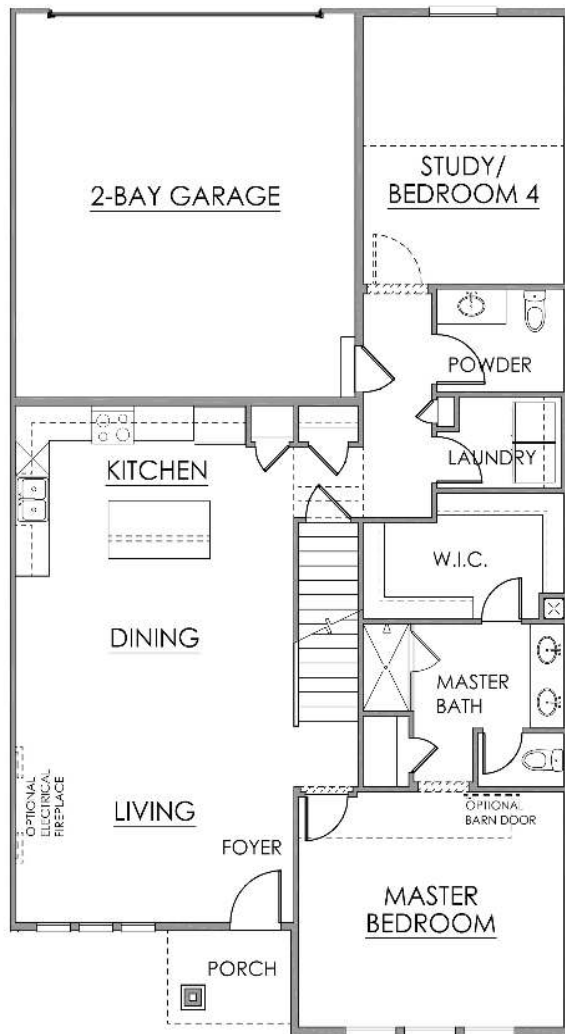
The Derby



*This is an artist rendering and color/elevation may change per building

Features:

- 1,880 square feet
- 2 bedrooms, plus study & loft
- 2.5 baths
- 2 car attached garage



Not all plans are available on all lots. Builder reserves the right to make changes to plans and specifications without prior notice. See a sales associate for more information.



JM Weston Homes

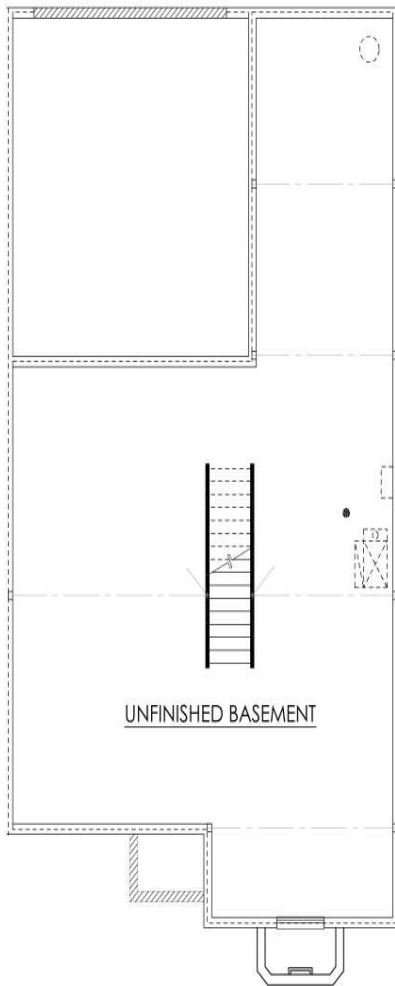
15501 E 112th Ave. Unit 1D

Commerce City, Denver 80022

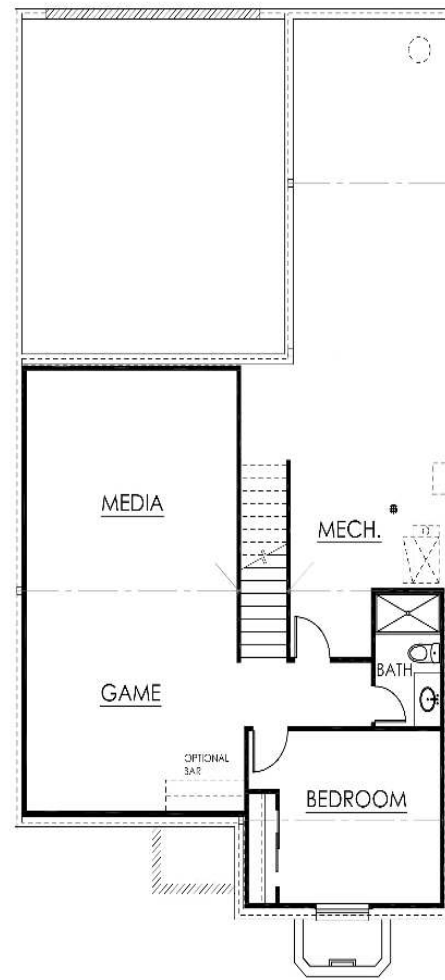
720-390-5645 | info@jmwestonhomes.com



*This is an artist rendering and color/elevation may change per building



Included Unfinished Basement - 1,298 sq. ft.



Optional Finished Basement - 787 sq. ft.

Not all plans are available on all lots. Builder reserves the right to make changes to plans and specifications without prior notice. See a sales associate for more information.