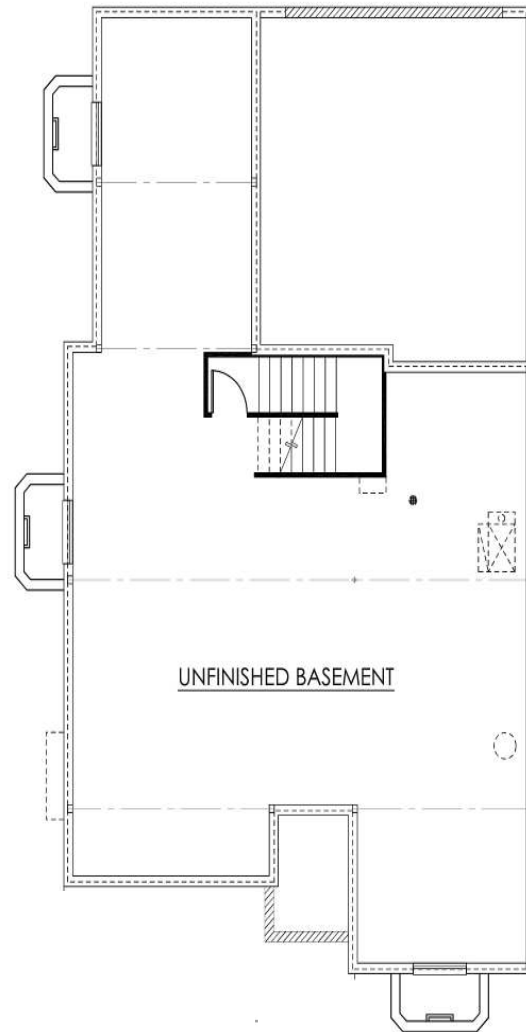




\*This is an artist rendering and color/elevation may change per building

Features:

- 1,434 square foot
- 2 bedrooms, plus study
- 2 baths
- 2 car attached garage



Included Unfinished Basement – 1,392 sq. ft.

Not all plans are available on all lots. Builder reserves the right to make changes to plans and specifications without prior notice. See a sales associate for more information.



JM Weston Homes

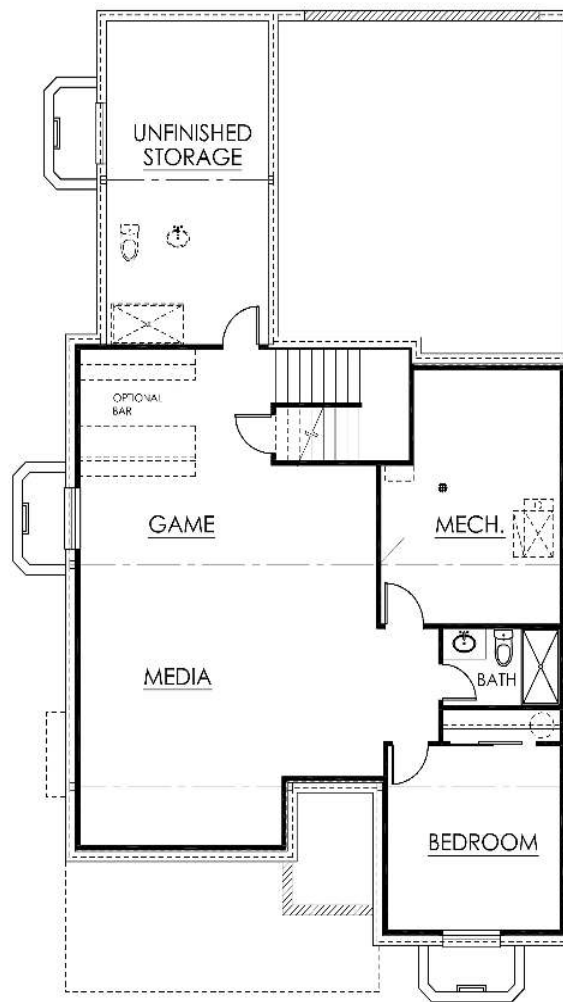
15501 E 112th Ave. Unit 1D

Commerce City, Denver 80022

720-390-5645 | info@jmwestonhomes.com



\*This is an artist rendering and color/elevation may change per building



Optional Finished Basement – 1,143-1,377 sq. ft.

Not all plans are available on all lots. Builder reserves the right to make changes to plans and specifications without prior notice. See a sales associate for more information.